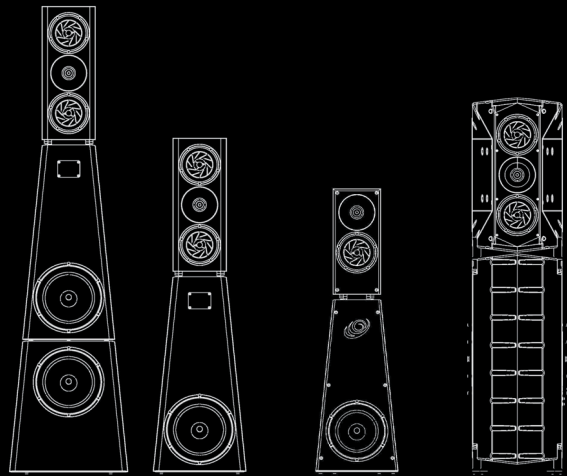
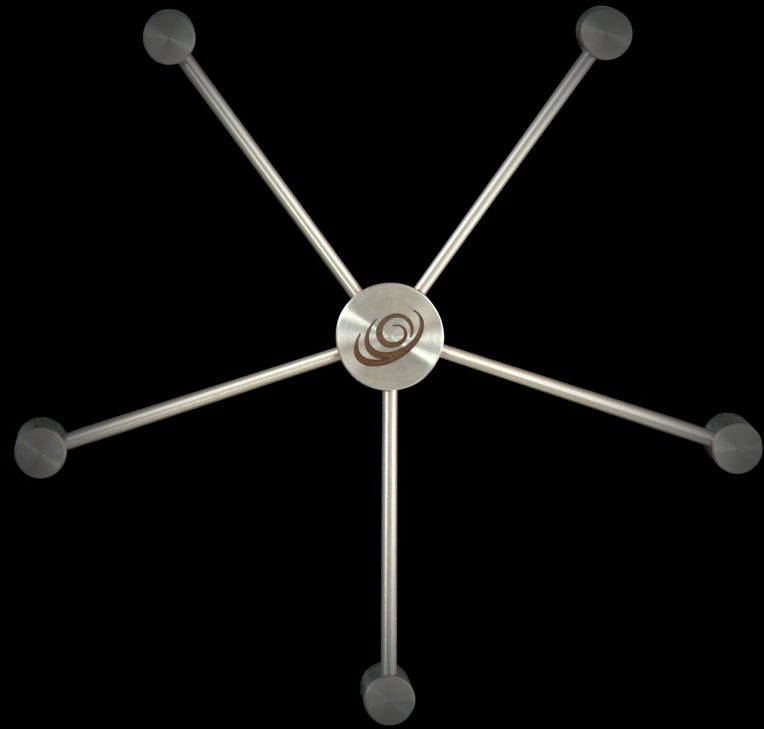


**FACTORY TOUR**



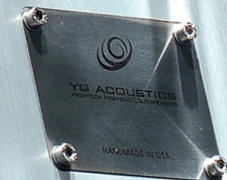
ANAT REFERENCE

KIPOD

VOYAGER

Handmade in U.S.A.

M/M Design marden@sponk.com YG uses Cinatron

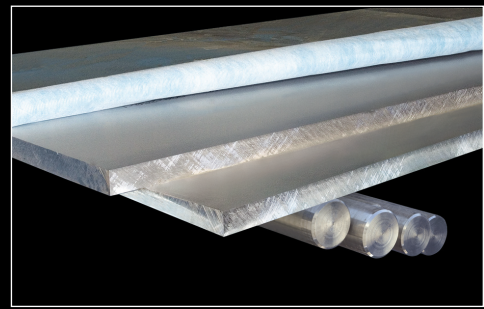




# The best loudspeaker on Earth. Period.

## Factory Tour

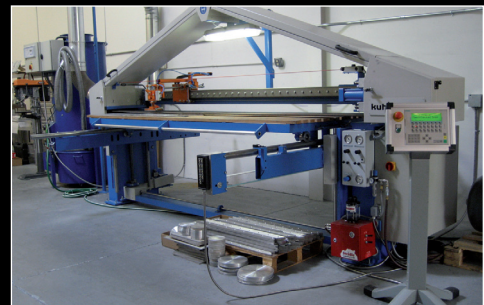
A loudspeaker design is only as good as its production quality. For this reason, YG Acoustics does not merely possess the most advanced technology. Our state-of-the-art factory, located near Denver Colorado, utilizes the most advanced techniques. Much of the machinery used is without parallel in the industry. Here is a brief glimpse into the process:



YG Acoustics enclosures start life as massive slabs of aircraft-grade aluminum. Critical parts use ballistic-grade alloy, which is otherwise not available commercially.



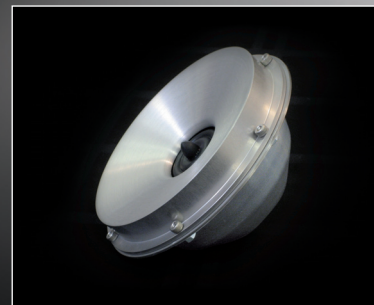
The material is precision-milled on Haas (U.S.A.) CNCs. Quality is supervised by a military-aerospace machining specialist. YG Acoustics' fine tolerances cannot be met by extrusion and cost-cutting tooling.



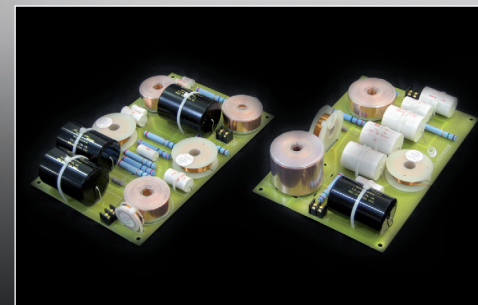
The machined parts are precision-ground on a custom-made Kuhlmeier (Germany) CNC polishing robot. YG Acoustics' proprietary finish combines extraordinary surface-hardness with unsurpassed visual refinement.



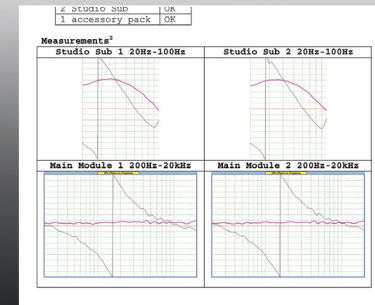
Cabinets are assembled by master-craftsmen using machine screws only (never glue), so future technologies can be fit onto existing units. Thus, one never needs to replace a YG Acoustics loudspeaker. Instead, upgrades are performed by adding expansion modules, or updating existing ones.



Drivers are made by Scan-Speak (Denmark), to YG Acoustics' specifications. Features that exceed the supplier's capabilities are produced in-house. This offers the best of both worlds - YG Acoustics' proprietary design with Scan-Speak's driver-know-how.



YG Acoustics' proprietary software is unique in that it can optimize both amplitude and phase at once. Mr. YG himself designs a custom crossover for every precisely-matched pair. All speakers get the same care as the reference prototype.



Every pair of loudspeakers undergoes a full measurement battery at YG Acoustics' state-of-the-art lab, and thorough listening. All parts are tested, and data is archived in the rare case that a replacement is ever needed.



Precise manufacturing is all in vein unless products reach customers in perfect condition. YG Acoustics speakers are packaged in laser-cut aluminum cases which follow their contours, and provide a more precise fit than wooden crates.



Thanks to our unique combination of unsurpassed technology with highest-quality production, we are confident in our commitment that with a correct system and setup, the **YG Acoustics Anat Reference Professional** is indistinguishable from live sound. Period.

*Yoav Geva*



Designed by Yoav Geva (Gonczarowski), winner of the Japanese audio Grand Prix (nearly unheard-of for a foreigner).

