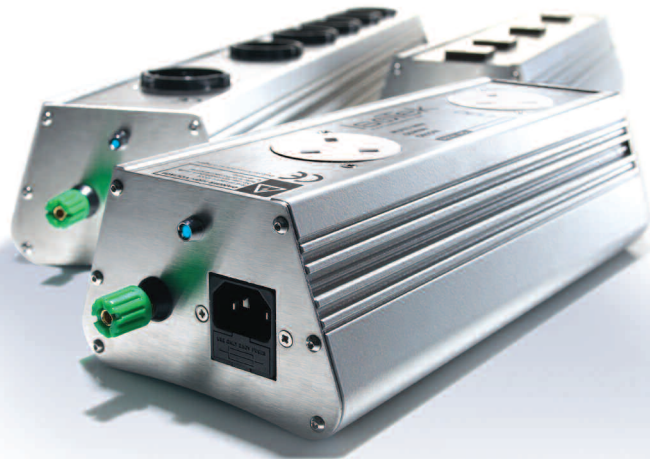


# Gemini



## Overview

Gemini can offer a complete solution for small entry level configurations to more sophisticated multiple component audio or audio visual entertainment systems.

The Gemini features a sophisticated Delta filter network coupled with proprietary 'Polaris-X' technology, which is based upon Kirchhoff's two current laws. 'Polaris-X' causes electrons to take the easiest route without the hazards of mains noise back flow. This ensures that components connected to the unit do not cross contaminate, an issue very rarely addressed by the majority of power conditioner manufacturers.

Gemini has extremely low insertion loss and therefore can be used with all equipment from power amplification to source components. This compact yet highly effective mains power filter is rated at 2300W (230 volts), 1100W (110 volts), and can feature 2, 4, 6 or 8 power outlets and is ideal for use in medium to entry level audio or audio visual systems.

## Key Features

- ✓ Sophisticated delta filter network
- ✓ 23dB reduction at 200kHz
- ✓ 48dB noise reduction at 120kHz
- ✓ Longwave transmissions reduced by 53dB
- ✓ Longwave noise 100,000 times quieter
- ✓ Easy 'plug-n-play' set-up
- ✓ Suitable for a complete system
- ✓ Component from component isolation
- ✓ Wall bracket mounting options available
- ✓ UK, EU and US specifications available

## Specifications

Number of outlets: . . . . . 2, 4, 6 or 8  
 Type of outlets: . . . . . UK, EU, US  
 Standard mains inlet: . . . . . IEC fused  
 Mains voltage: . . . . . 100-240VAC/50-60Hz  
 Maximum current: . . . . . 10Amps HRC  
 Total wattage: . . . . . 2300 (UK/EU) 1100 (US)  
 Dimensions: . . . . .  
 . . . . . 120 x 80 x 410/555/700mm (WxHxD)  
 Weight: . . . . . 2.75Kg

